

CELEBRATING EXCELLENCE: WACA Honors Construction Industry's Finest with the 2023 Construction Excellence & Excellence in Safety Awards



It is with immense pride that the Wall And Ceiling Alliance (WACA) announced the highly anticipated arrival of the 13th annual Construction Excellence Awards (CEA) and Excellence in Construction Awards (ESA) project winners. This remarkable awards platform recognizes the exceptional achievements of contractors, suppliers, and manufacturers who have left an indelible mark on the construction industry in Northern California.

WACA unveiled a spectacular lineup of award-winning projects, representing the pinnacle of construction achievement across various categories. With utmost precision and

unwavering commitment, these contractors and individuals have redefined craftsmanship, pushing the boundaries of creativity and innovation. From inspiring architectural wonders to intricate designs that captivate the imagination, each project tells a unique story of excellence and dedication.

The celebrated contractors had an opportunity to rejoice in their accomplishments. The projects and companies listed represent the highest of construction achievement in the respective categories.



CALIFORNIA DRYWALL CO.

Category: Residential/Lodging Interior

Project: LUMA Hotel

Architect: Hornberger + Worstell

General Contractor: Hathaway Dinwiddie

Manufacturer: ClarkDietrich Building Systems, Grabber Construction Products, United States Gypsum

Supplier: L&W Supply

Photographer: Dylan Patrick



PATRICK J. RUANE, INC.

Category: Commercial Exterior

Project: Atria Coterie San Francisco

Architect: Handel Architects

General Contractor: GL Builders

Manufacturer: Dryvit Systems, Inc.

Supplier: L&W Supply

Photographer: Dennis Lodes



CALIFORNIA DRYWALL CO.

Category: Institutional Exterior

Project: Sutter Santa Rosa Regional Hospital Phase 1

Architect: Stantec

General Contractor: HerreroBoldt

Manufacturer: Armstrong World Industries, ClarkDietrich Building Systems, Dryvit Systems, Inc., Georgia Pacific Gypsum, Hilti, PABCO Gypsum, Simpson Strong-Tie, United States Gypsum

Supplier: L&W Supply *Photographer: Kyle Jeffers*



RAYMOND-NORTHERN CALIFORNIA, INC.

Category: Institutional Interior

Project: Kathleen MacDonald High School

Architect: LPA Design Studios

General Contractor: Swinerton Builders

Manufacturer: CEMCO Steel, ClarkDietrich Building Systems, Olmar Supply, United States Gypsum, Georgia Pacific Gypsum

Supplier: L&W Supply, Olmar Supply



J&J ACOUSTICS, INC.

Category: Green Building

Project: TechCU Arena

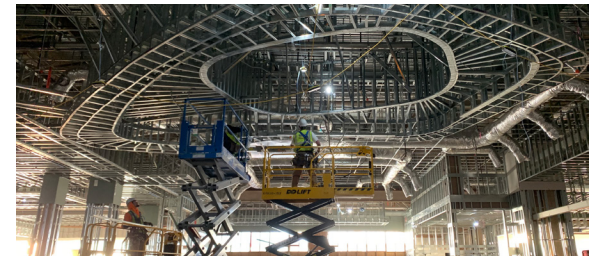
Architect: Devcon Construction

General Contractor: Devcon Construction

Manufacturer: ClarkDietrich Building Systems, Georgia Pacific Gypsum

Supplier: Foundation Building Materials

Photographer: TechCU/Devcon Construction



COMPONENT WEST

Category: Ceilings

Project: Sky River Casino

Architect: Klai Juba Wald architecture + interiors,

Friedmutter Group, Dezmotif Studios, Tandem

General Contractor: AECOM Tishman Yates, a Joint Venture

Manufacturer: ClarkDietrich Building Systems

Supplier: Foundation Building Materials



CALIFORNIA DRYWALL CO.

Category: Innovation in Construction

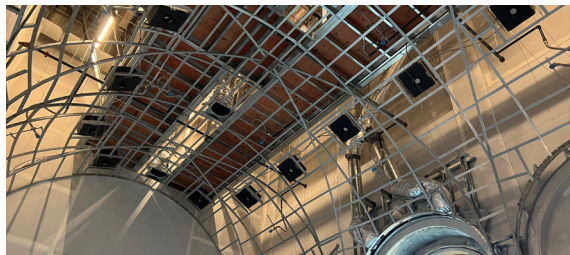
Project: Middle Plaza

Architect: DES Architects + Engineers, Kenneth Rodrigues & Partners

General Contractor: Vance Brown Builders

Manufacturer: BMI, CEMCO, ClarkDietrich Building Systems, Henry Company, Grabber Construction Products, Hilti, Rivers Del Rey, Stockton Products, Structa Wire, United States Gypsum

Supplier: Westside Building Material Corp., L&W Supply



IRONWOOD COMMERCIAL BUILDERS, INC.

Category: Project of the Year – Interior Over \$500K and Commercial Interior

Project: Feather River Temple

Architect: The Richardson Design Partnership

General Contractor: Oakland Construction

Manufacturer: SCAFCO Steel Stud Company, United States Gypsum

Supplier: CWallA, Action Gypsum Supply

Photographer: Christopher Bushard



PATRICK J. RUANE, INC.

Category: Project of the Year – Exterior Over \$500K, Residential/Lodging Exterior, and EIFS

Project: 200 Linden

Architect: BDE Architects

General Contractor: Suffolk Construction

Manufacturer: Dryvit Systems, Inc.

Supplier: L&W Supply

Photographer: Dennis Lodes Photography

2023 EXCELLENCE IN SAFETY AWARD WINNERS



COMPONENT WEST
125 – 250K Annual Hours



GIAMPOLINI GROUP
250 – 500K Annual Hours



ANNING-JOHNSON COMPANY
500K – 1 Million Annual Hours



CALIFORNIA DRYWALL CO.
Over 1 Million Annual Hours