

A PUBLICATION OF THE WALL AND CEILING ALLIANCE

# THE QUARTERLY

FALL 2017



## 2018 CONSTRUCTION EXCELLENCE AWARDS CALL FOR ENTRIES

PAGE 7

## CREATING A SOLUTION TO REVISED *SILICA STANDARD*

PAGE 20

A LOOK BACK AT THE WALL, CEILING  
& TECHNOLOGY CONSTRUCTION

## EXPO

PAGE 14

**REDUCED LABOR  
INCREASED LOAD CAPACITY  
3<sup>RD</sup> PARTY TESTED**

**PLC4 BYPASS  
DEFLECTION CLIP**



IAPMO  
**UNIFORM**  
ER 0494

The PLC4 Deflection Clip is third-party tested and third-party certified – with increased capacity and safety.

Superior movement, strength, and versatility make it the obvious choice in bypass conditions.

- Seamless vertical deflection while eliminating inserts, saving time and reducing labor
- Proprietary shouldered screws are provided and easy to install
- Third-party testing proves the PLC4 has the greatest allowable load capacity
- Chamfered corners increase safety and provide convenient handling, reducing risk of injury on the job site

**SCAFCO**  
Steel Stud Company



Six Convenient Northern California/Nevada Locations

Fresno San Francisco San Jose Stockton Sacramento Reno  
559-258-9911 415-852-7774 408-666-2043 209-470-0053 916-424-7700 775-440-6380

Preferred Distributor of SCAFCO and Other Quality Products

Contact SCAFCO Technical Services: 509-789-8669 | [Technical@SCAFCO.com](mailto:Technical@SCAFCO.com)

[www.SCAFCO.com](http://www.SCAFCO.com)

# COMMITTED TO THE BEST OUTCOMES FOR OUR MEMBERS



Jim Ruane  
Board President



While we at WACA are involved in many endeavors on a daily basis, I think it's important to emphasize some of the most important undertakings we are charged with. I am speaking specifically about negotiations with our labor partners.

Negotiations occur typically every four years with each of the four trades WACA members employ. With all these agreements, we are occupied and engaged with contract details throughout the year.

We just concluded negotiations with the two plasterer unions, which took many months to complete. We agreed to a wage rate encompassing the next four years. In addition to direct wage paid, the following items were revised and included in hourly wage: fringe benefits, health and welfare, pension, apprenticeship contributions, vacation, dues, and all of the other tax-related items. A particular challenge was getting our plaster local representing the inner Bay Area to wage and fringe parity with the south Bay and regional locals. This effort turned out to be more complicated than anticipated. I am pleased to say that by working together with much fortitude, we are on track to achieve fringe uniformity over the next four years. This change will make it easier for workers and contractors alike to move work crews between locations, especially if members are signed to multiple collective bargaining agreements. This will also provide great relief to the accounting departments.

The latest collective bargaining agreements and wage schedules for the different trades are available to membership and can be obtained by going to WACA's home page. The documents are updated on the website when new agreements and wages are changed and/or being adapted.

WACA also negotiates with tapers/finishers, hod carriers and carpenters. With this said, we are frequently determining contract language intent and interpretations, participating in the grievance processes, and attending trust fund meetings that focus on fringe benefits, audits and delinquencies. A key component to our success is maintaining and strengthening relationships with our labor partners. These are time-consuming activities, but we are firmly committed to achieving the best outcomes for contractors.

I want to thank our negotiating teams for their tireless efforts and for taking time away from their daily business responsibilities to participate in the rigorous negotiating process.

Stay busy and have a wonderful fall season.



## Board of Directors

**Jim Ruane, President**  
Patrick J. Ruane, Inc.

**David Link, Vice President**  
Performance Contracting, Inc. (PCI)

**Nancy Brinkerhoff, Secretary/Treasurer**  
Ironwood Commercial Builders, Inc.

**Don Archuleta**  
KHS&S Contractors

**Gregg Brady**  
Brady Co./Central California, Inc.

**Jim Watson**  
Swinerton Builders

**John Sytsma**  
Anning-Johnson Company

**Kristen Meiswinkel**  
RFJ Meiswinkel Company

**Roger E. Henley Jr.**  
Henley & Company

**Shawna Alvarado**  
O'Donnell Plastering, Inc.

**Steve Eckstrom**  
California Drywall Co.

**Tim Stiller**  
Nevell Group, Inc.

# TABLE OF CONTENTS



## THE QUARTERLY

A publication of the Wall And Ceiling Alliance

Fall 2017  
Volume 4, Issue 4

Wall And Ceiling Alliance  
5726 Sonoma Drive  
Pleasanton, CA 94566  
Office: (925) 600-0475  
Fax: (925) 600-0618  
communications@wallandceiling.org  
www.wallandceilingalliance.org

The Wall And Ceiling Alliance (WACA) is a wall and ceiling trade association that promotes and advocates for the welfare of its members and industry. We support our community by providing vital resources through educational forums, technical assistance, government advocacy, labor relations, industry promotion and unified representation.

### EDITORIAL STAFF

Carmen Valencia-Castillo  
Marketing and Communications Director

Frank E. Nunes  
Chief Executive Officer

Julie Dunaway  
Marketing Communications Coordinator

### PUBLISHING TEAM

Innovative Publishing  
Publisher

Adrienne Vittoe  
Editor

Samantha Rubsam  
Sales/Marketing Consultant

Innovative Publishing specializes in creating custom publications for associations and businesses.

www.innovativepublishing.com

### On the cover:



Photo: Iwan Baan  
RFJ Meiswinkel Company  
San Francisco Museum of Modern Art

## FEATURES



14

A Look Back at the Wall, Ceiling & Technology Construction Expo



20

Safety Update: Creating a Solution to Revised Silica Standard

## EXTRAS

Hazardous Waste Worker Class .....	6
2018 Construction Excellence Awards Call for Entries .....	7
Golf Tournament Sold Out Record-Breaking Early .....	10

## DEPARTMENTS

The President's Corner .....	3
WACA Board of Directors .....	3
Associate Member Spotlight: Specified Technologies, Inc. ....	8
Contractor Member Spotlight: RFJ Meiswinkel Company .....	18
Calendar of Events .....	22
Welcome New Associate Member .....	25
WACA Members .....	26

## ADVERTISERS

CEMCO .....	5
www.cemcosteel.com	
CWallA .....	23, 27
www.cwalla.com	
JHS CPAs LLP .....	25
www.jhs.com	
LiUNA/NCDC .....	22
www.ncdclaborers.org	
Northwest Wall & Ceiling Bureau .....	22
Plastic Components .....	25
www.plasticcomponents.com	
SCAFCO Steel Stud Company .....	2, 28
www.scafco.com	
VinylCorp .....	19
www.vinylcorp.com	
Wright Bros. Supply .....	25
www.wrightbrossupply.com	

# CEMCO's **SAFETY EDGE** is YOUR Solution

Safety is paramount on today's projects. That's why professionals like David Smith, Division Manager-Special Projects for Marek Brothers-Dallas, requests Safety Edged™ products from CEMCO. "Since these products have a much safer edge on them, we benefit by having safer products in the hands of our professionals, reducing injuries, worker's comp mods, and insurance rates."

**SAFETY  
EDGED**  
BY CEMCO



Typical Slit Edge  
of Stud/Track



After Patent-Pending  
Safety Edged Processing

- ➔ Safer for handling in yards and on jobs.
- ➔ Improve the speed of work flow.
- ➔ Reduced workers' comp mods and insurance rates.
- ➔ Available on drywall stud, track and accessory lines at all CEMCO plants.



[www.cemcosteel.com](http://www.cemcosteel.com) | 800.775.2362

City of Industry, CA | Pittsburg, CA | Denver, CO | Ft. Worth, TX

# HAZARDOUS WASTE WORKER CLASS

*Offered by Carpenters Training Committee for Northern California*

*16 registrants required to hold the class*

This is a 40-hour class (five eight-hour day-time sessions) meeting Occupational Safety and Health Administration (OSHA) standards requirements for hazardous waste site workers. The class will cover, among other things, OSHA's Hazardous Waste Operations and Emergency Response standard, commonly known as HAZWOPER. HAZWOPER is the standard designed to maintain the health and safety of workers at hazardous waste sites and during emergency response. Requirements in this standard include employers providing medical surveillance, site work control and training.

The course covers hazard recognition, which reviews the health effects and properties of chemicals. An example of this would be an atmosphere with less than 19.5 percent oxygen by volume, a level dangerous to life and health. Other characteristics of chemicals that are covered are the flammability/explosive limits, boiling points and which chemicals are dangerous when combined with others. Workers may encounter unknown chemicals, such as a drum of chemicals without a label, and this training will instruct you on how to safely handle this situation.

This course will also instruct members on how to read the hazard identification materials. This includes the Safety Data Sheet (SDS) and identifies a chemicals manufacturer, what hazardous chemicals it contains, the health and safety hazards of the product, and protective measures needed when

working with it. NIOSH Pocket Guide to Chemical Hazards, produced by the National Institute for Occupational Safety and Health (OSHA's science source), will be reviewed, as will Department of Transportation placards and labels.



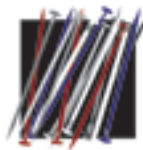
When working in hazardous environments, monitoring must be performed to know what chemicals are present and what concentrations are in the air. This will determine the level of protection needed by the workers. In addition to monitoring, there may be sampling done. You will wear a monitor in your breathing zone, which will measure how much you personally are exposed to.

This class includes a section on personal protection equipment. A thorough discussion and hands-on exercises will show you how to inspect, use and clean different types of respirators. This is in conjunction with "dressing out" in different types of protective clothing. There are four levels of protection, labeled A, B, C and D. Level A is the highest level, and D is the lowest. Level A protection includes full-face breathing apparatus or supplied air respirator, totally encapsulating

chemical-protective suit, outer and inner protective gloves, and chemical-resistant boots. Level B has the same level of respiratory protection, but less skin and eye protection than Level A. You will be shown step by step the procedures for suiting up.

The final two sections of the class will address work practices and decontamination. Most hazardous work zones are labeled either hot, warm or cold, each with its own requirements. Hazardous waste workers must always work in teams of two or more. In addition, team workers must maintain line-of-sight communication, and communication systems must be worked out prior to the start of work. When leaving a hazardous site, workers must pass through decontamination. Decontamination is the process of removing contaminants from personnel and equipment to protect yourself, your fellow workers and your family. You will learn these steps for going from a hot to a cold zone.

This hazardous waste worker class will ensure your ability to work with hazardous products without endangering your health or livelihood.



*Hazardous waste worker class will be offered to membership with a minimum of 16 registrations required to hold this class. Sign up by calling the Carpenters*

*Training Committee for Northern California administrative team or Bonnie Stone at (925) 462-9640.*

# 2018 CONSTRUCTION EXCELLENCE AWARDS



**Deadline for Entries: Friday, January 19, 2018**

*Projects must have been completed in the 12 months prior to January 19, 2018*

The Construction Excellence Awards (CEA) are an exclusive competition that recognizes outstanding work and craftsmanship in the wall and ceiling industry. Only WACA contractor member projects are eligible to enter this select competition. Project application forms can be submitted by both associate and contractor WACA members.

## WHY PARTICIPATE

- ★ Winning projects are recognized at one of the biggest wall and ceiling award shows in our industry.
- ★ This is an opportunity to recognize key employees, business partners, architects and general contractors.
- ★ Companies and winning projects will be highlighted in industry publications.
- ★ Professional videos will be available to showcase winning projects for marketing purposes.
- ★ Winning projects will be featured on WACA's website for a full year.
- ★ WACA will feature winning projects in *The Quarterly* magazine.

### TWO WAYS TO ENTER:

- 1) Online application and photo upload on WACA's website, [www.wallandceilingalliance.org](http://www.wallandceilingalliance.org)
- 2) PDF download application from WACA's website, submit with photos via mail or email to Mike Nonn at [mike@wcbureau.org](mailto:mike@wcbureau.org)

## CEA PROJECT CATEGORIES

- Residential Exterior and Interior
- Commercial Exterior and Interior
- Retail Exterior and Interior
- Institutional Exterior and Interior
- Historical Exterior and Interior
- EIFS
- Ceilings
- Green Building
- Project of the Year Under \$500,000 – Exterior
- Project of the Year Over \$500,000 – Exterior
- Project of the Year Under \$500,000 – Interior
- Project of the Year Over \$500,000 – Interior

### QUESTIONS? Contact:

Mike Nonn, technical representative, [mike@wcbureau.org](mailto:mike@wcbureau.org)  
Ben Duterte, technical director, [ben@wcbureau.org](mailto:ben@wcbureau.org)

## EXCELLENCE IN SAFETY CATEGORIES

- Over 1 Million Annual Man Hours
- 500,000-1 Million Annual Man Hours
- 250,000-500,000 Annual Man Hours
- 125,000-250,000 Annual Man Hours
- Under 125,000 Annual Man Hours

**Safety Award Application: Online Only at** [www.wallandceilingalliance.org/2018-safety-award-application.html](http://www.wallandceilingalliance.org/2018-safety-award-application.html)



# Specified Technologies Inc.

## *STI Firestop*

by Darren Haynes, NorCal Territory Manager



***Specified Technologies Inc. (STI) works closely with the construction industry to create simple solutions to complex firestopping problems across a broad range of market segments and industries worldwide. At STI, firestopping is all we do!***

STI products and systems offer innovative firestop solutions for all types of new construction and retrofit applications. With firestopping as our only business, we concentrate all our resources on providing the highest-quality and fully tested firestopping solutions. We lead the industry in developing fire protection systems that help stop the spread of fire, smoke and hot gases.

### **American Owned. American Made. Global Footprint.**

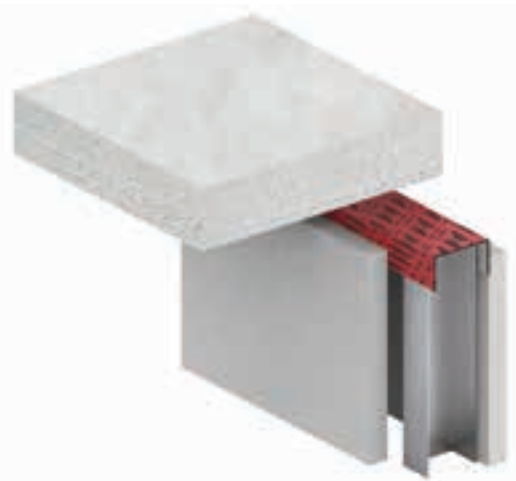
With our company headquartered in Somerville, New Jersey, our products are proudly designed, tested, manufactured, assembled and packaged here in the U.S. STI is committed to creating jobs here at home, encouraging American technology, promoting American innovation, delivering premium quality and preserving American manufacturing.

STI has offices and representation throughout the United States, Canada, Europe, the Middle East, India, China, Southeast Asia and Latin America. We partner with over 40 independent representative agencies and work with over 1,000 distribution outlets worldwide, providing extensive international coverage and offering our customers the personal attention they deserve.

STI offers the most comprehensive range of firestop products on the market and backs them with the most UL®-tested systems in the business — over 1,400 — from penetration firestop systems and perimeter barrier solutions to static and dynamic construction joints. Adequate sealing of construction joints involves not just the achievable fire and smoke ratings, but also surviving the movement of the underlying joint. STI is a leader in the development of construction joint firestop materials offering products and solutions that exceed even the most extreme of movement needs. Our SpecSeal® ES Sealant and SpecSeal® AS200 Elastomeric Spray have been tested to accommodate joint movements of up to 25 percent and 50 percent, respectively.

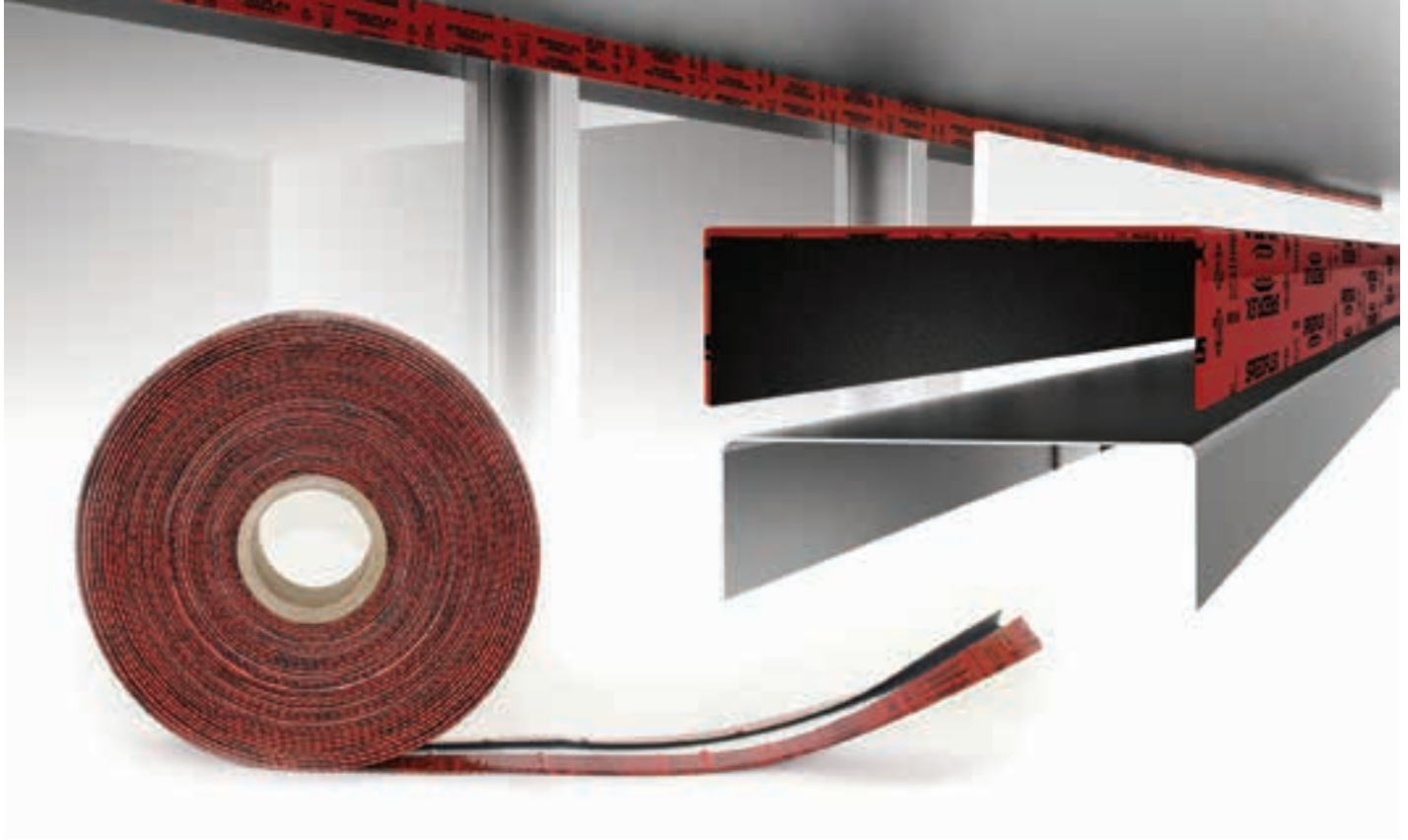
We invest the time to understand the unique needs of specific construction segments and applicators, and then develop the products, tested systems and programs tailored to meet these needs. We're at the forefront of developing the most advanced and cost-effective firestop solutions on the market. We offer premium quality, superior performance and best-in-class service, training and support. The results are industry-changing, innovative, patented technologies such as SpecSeal® Track Top Gasket (TTG), the EZ-Path® Fire Rated Pathways and LCI® Intumescent Sealants, as well as the industry's first web-based "Submittal Builder™" program.

In conditions where 100 percent compression and extension of the joint is mandatory, traditional methods fall short. In these exceptionally high-movement conditions, only SpeedFlex™ Track Top Gasket and SpeedFlex™ Joint Profile are up to the task. The SpeedFlex™ Joint Profile further enhances the movement capability of our SpecSeal® AS200 Spray, accommodating 100 percent movement on up to a 3/4-inch-wide joint. The SpeedFlex™ Track Top Gasket provides 100 percent movement on up to a 1/2-inch-wide joint and is installed while the wall is being constructed, eliminating the need to revisit the joint afterward to apply sealants or sprays.



SpecSeal® TTG makes short work of construction joints in gypsum board construction. TTG eliminates the need for firestop sealants or sprays. TTG is easily cut to length with scissors or a sharp knife, installing quickly with no waste. It's red in color for easy identification and inspection.

STI provides quality products without distractions or disruptions of the demands from other interior business units. But industry-leading firestop products is not all we do. To support the firestop industry, STI also offers world-class services: engineering services, research and development, on-site fire lab testing, technical training and digital resources.



### **Engineering Services**

STI's engineering service experts help customers optimize productivity during design, construction and post-construction. They work in conjunction with STI's world-renowned engineering team, offering solutions to complex firestopping problems to help ensure code compliance. Our typical turnaround for engineering judgments is less than 24 hours because we have over 250 years combined firestop engineering experience under one roof.

We deliver timely solutions for:

- Engineering judgments
- Technical inquiries
- Custom firestop training
- Specification review
- Project plan review
- BIM modeling and LEED letters
- Documentation for authority having jurisdiction
- Upfront detail sheet generation

### **Research and Development**

Our engineering development team is consistently researching methods to develop new sustainable products and systems to enhance safety.

### **On-Site Fire Lab Testing**

STI is a UL®-approved testing facility equipped with a state-of-the-art, environmentally friendly burn furnace. Tests are regularly performed to analyze and develop new products and standards for the firestop industry.

### **Technical Training**

We offer expert hands-on American Institute of Architects (AIA)-accredited training programs — on-site or online — to educate and inform trades and professionals. Introductory through advanced programs are available for all skill levels. Access to STI's Firestop University will allow you to receive instant notifications anytime we add new course information, which is available to the public.

### **Digital Resources**

STI provides a toolbox of online programs to remove the complexity of designing firestop systems. A set of powerful tools assures that the right systems are selected for the fastest and most cost-effective installation, including:

- Firestop Clash Management
- BIM Objects
- Submittal Builder App
- Submittal Builder
- Access STI
- LEED® Credit Calculator

For over 25 years, our team has worked hand in hand with the construction industry to create simple solutions to complex firestopping problems. Our product lines are engineered to deliver powerful performance. Because our system designs are user-driven, they are easier to apply than other systems. The result is simply designed, outstanding fire protection systems, which often result in lower installation costs.

At STI, we believe our relationship with WACA members helps our innovation in the interior finishing industry. Through interactive events and voice-of-customer programs, we can best understand our customers' business and the challenges they face on a day-to-day basis. We strive to create solutions with our customers that are high-performing and cost-effective. Because firestopping is our exclusive focus, we can provide quality products and services without distractions or disruptions of the demands from other interior business units.

STI is committed to supporting our customers by providing sustainable firestop solutions, by treating them like partners and by consistently adding value beyond the sale. No matter the scope of the project, clients can depend on STI to deliver knowledgeable advice, premium quality products and the total firestop solution.

Darren Haynes can be reached at [dhaynes@stifirestop.com](mailto:dhaynes@stifirestop.com). For more information visit STI Firestop on the web at [www.stifirestop.com](http://www.stifirestop.com).



# GOLF TOURNAMENT SOLD OUT RECORD-BREAKING EARLY!



*To view all event photos,  
visit the Photo Gallery  
on our website, [www.  
wallandceilingalliance.org](http://www.wallandceilingalliance.org)*

The tournament was sold out one month in advance of the event date. Over 200 golfers took part in the annual tournament on Friday, October 6, at Poppy Ridge Golf Course. The course offered three nine holes to accommodate the large group.

Beverages and breakfast burritos were offered until the 11 a.m. shotgun start. A taco bar with all the fixings was available so golfers could eat and play throughout the day. At the end, over 60 raffle prizes were given away. Donna Amo with Kaiser Permanente donated a beach cruiser bike for the grand raffle prize. Thank you Kaiser for your generous contribution! The evening concluded with a buffet dinner as the tournament winners were announced. Winners included closest to the pin, longest drive and foursome.

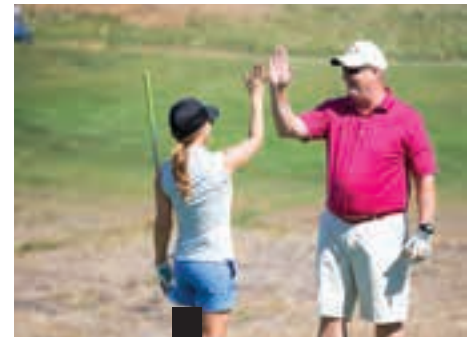
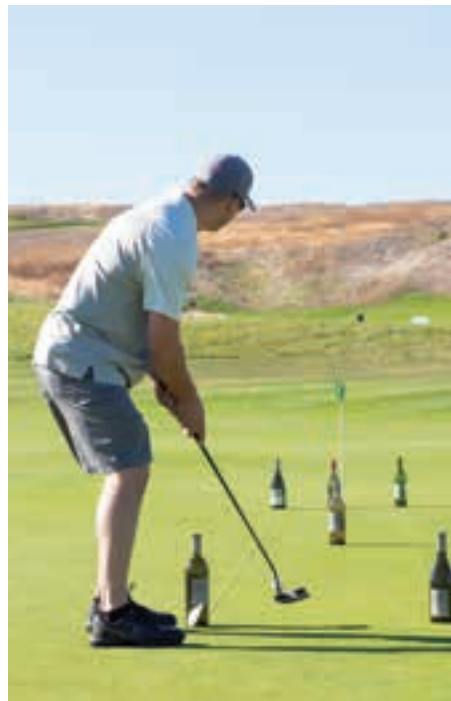
Mega sponsors CEMCO, Hilti, JHS CPAs LLP and STI Firestop elevated the event with their generous contributions. Hole sponsors included AMS/Allied Building Products, Carpenters 46 Northern California Counties Conference Board, Cement Masons Local 400, KHS&S Contractors, Northern California District Council of Laborers, PABCO Gypsum, Plasterers and Cement Masons Local 300, Simpson Strong-Tie and Western States Drywall/Lathing Industry Labor-Management Cooperation Committee, Inc. There were hole sponsors out on the course, providing beverages and interacting with guests. Event sponsors included BASF Senergy Wall Systems, Brady Company/Central California, Inc., CWallA and Kaiser Permanente. Tee sponsors were Bear Scaffold and Services, CertainTeed Gypsum, District Council 16, Drywall/Lathers Local Union Local 68, Fortifiber Building Systems Group, LMCI, Westside Building Material Corp. and Wright Bros. Supply.

Sponsor support helped provide frozen margaritas and ice cream with homemade waffle cones made on the spot at different holes. The cherry on top was a pair of Oakley sunglasses, valued at approximately \$125, given to every guest!

WACA thanks all sponsors for making this event a great success.







## THE WALL AND CEILING ALLIANCE WOULD LIKE TO THANK ALL OUR SPONSORS:

### MEGA SPONSORS



### EVENT SPONSORS



### HOLE SPONSORS



### TEE SPONSORS





Join us as we celebrate the season with a

# Holiday Party

the most anticipated event of the year!

*Saturday, December 9, 2017*

6:30 p.m. – Cocktail Reception in Grand Ballroom  
7:30 p.m. – Dinner and Dancing to Follow

Starring: Wonderbread Five Band!

The Fairmont Hotel  
950 Mason Street  
San Francisco, CA 94108

Price: \$150 per person (10 seats per table)  
Only 2 tables per entity/company

**Register Online:** "Calendar of Events" page at  
[www.wallandceilingalliance.org](http://www.wallandceilingalliance.org)

Event registration will close on December 1  
or when sold out!

For the Fairmont hotel room rate of \$309 per night, call the Fairmont to book your room at (415) 772-5000 and ask for the Wall And Ceiling Alliance special room rate. Room block is limited and sells out early.

## *Sponsorship Opportunities*

### *Platinum Sponsor – \$3,000*

Includes a table of 10 tickets, and logo placement on our home page, in magazine and newsletter, and throughout event

### *Gold Sponsor – \$2,500*

Includes a table of 10 tickets, logo placement in magazine, newsletter and throughout event

### *Silver Sponsor – \$1,500*

Includes six tickets, logo placement in newsletter and throughout event, and company name in magazine

### *Bronze Sponsor – \$1,000*

Includes four tickets, logo placement at event and company name in newsletter

### *Supporting Sponsor – \$500*

Includes two tickets, logo placement at event

*For sponsorship reservations, go to  
[www.wallandceilingalliance.org](http://www.wallandceilingalliance.org)*

# 2017 Wall, Ceiling & Technology Construction EXPO

On July 28, the Wall, Ceiling & Technology Construction EXPO was held at the Alameda County Fairgrounds in Pleasanton, California. The expo is one of the few regional programs organized for the wall and ceiling community in Northern California. It's designed to build connections and increase industry awareness on the most current information and resources available.

Exhibitors were composed of suppliers, manufacturers, engineering firms, safety professionals and laborers, who showcased a variety of industry products and skills. Product displays and live demonstrations offered attendees an opportunity to interact one-on-one with exhibitors. An important component of the expo was to build connections and grow working relationships with industry professionals. "We broadened our contacts for business development more in a few hours than

we could ever cultivate in weeks of effort. The WACA expo is an invaluable opportunity to speak with vendors and contractors face to face, while learning what's challenging and what's changing in our industry," said Scott P. Leary, executive director at Bay Area Builders Exchange.

Technology exhibited included augmented reality, also known as AR. The demonstration highlighted how requests for infield-verifications (RFIs) could be viewed through AR head goggles. AR interaction identified exact locations of the RFI within the as-built environment while a robust amount of information was displayed in real time. Expo attendees were intrigued with the demonstration. The interactive demonstration struck up conversations about the future of technology in construction. "Overall WACA's expo was a great experience, and I look forward to returning next year. I highly recommend that

other industry professionals attend," said Cody Nowak, AR technology exhibitor.

The carpenter apprentices created one of the largest demonstrations in the exhibit hall. Apprentices framed a 16-foot-by-20-foot structure with a serpentine feature wall, and also applied exterior lath, interior drywall and door frames. The demonstration was an example of the project an apprentice is required to create to become a journeyman. The expo brought in people from many geographical locations to progress their knowledge in the area of walls and ceilings.

*For event photos and video, visit the Photo and/or Video Gallery at [www.wallandceilingalliance.org](http://www.wallandceilingalliance.org).*



*"We broadened our contacts for business development more in a few hours than we could ever cultivate in weeks of effort. The WACA expo is an invaluable opportunity to speak with vendors and contractors face to face, while learning what's challenging and what's changing in our industry."*

— Scott P. Leary, Executive Director at Bay Area Builders Exchange







## EXPO EXHIBITORS:

Allura Fiber Cement  
 Armstrong World Industries  
 BackrTape  
 Bay Area Builders Exchange  
 BEHR® Paint  
 Carpenters Local 152  
 Carpenters Training Trust Fund  
 for Northern California  
 Carpenters Union Local 46  
 Sacramento  
 Ceilings and Interior Systems  
 Construction Association  
 CEMCO  
 CertainTeed Gypsum  
 ClarkDietrich Building Systems  
 Consolidated Fabricators Corp.  
 CWALLA  
 Demand Products, Inc.  
 DOW Building Solutions  
 Dryvit Systems, Inc.  
 Fortifiber Building Systems Group  
 Fry Reglet  
 GC Products, Inc.  
 Georgia-Pacific Gypsum  
 Hilti  
 Hunter Panels XCI  
 JHS CPAs, LLP  
 McCain Walls  
 Northwest Wall and Ceiling Bureau  
 On-Site Health & Safety  
 PABCO Gypsum  
 Parex USA Incorporated  
 PeerAssist  
 PlanGrid  
 Plastic Components Inc.  
 Protecto Wrap  
 PROSOCO  
 Radius Track Corporation  
 Raymond-Northern California, Inc.  
 S & K Marketing Group, LLC  
 SCAFCO Steel Stud Company  
 Simpson Strong-Tie  
 Specified Technologies, Inc. (STI)  
 dba Firestop  
 Structa Wire Corp.  
 Swinerton Builders  
 Syntheon Inc.  
 Technology – Cody Nowak,  
 DisruptAEC  
 The QUIKRETE Companies  
 Tyvek  
 VaproShield  
 Vinyl Corp.

# RFJ Meiswinkel Company

by Kristen Meiswinkel, Managing Director



The Meiswinkel family began its plastering company in the 1930s, started by my grandfather, Frederick Meiswinkel. His untimely passing put my grandmother, Barbara Meiswinkel, in the driver's seat during a time when it was uncommon for women to work or run a business. Later, the company was taken over by their three sons, Rudolph, Frederick and Joseph, and this is how RFJ Meiswinkel Company was established. Today, the company is managed by me, Joseph's daughter. We are a third-generation, woman-owned family business.

We specialize in wall and ceiling construction, drywall, and plaster for commercial, institutional, historical restoration and residential projects. Our company provides a full range of services, including light-gauge metal framing, metal lath, gypsum wallboard systems, exterior cement plaster, interior veneer plaster, exterior insulation finishing systems, spray fireproofing and cement panels.

RFJ Meiswinkel Company has led the field of ornamental plaster replacement and repairs in California for most of the last century. We cover all of Northern California, with projects up to Santa Rosa and Napa and as far south as Los Angeles. Much of our effort is seen in notable projects throughout the Bay Area. We've also done work

as far as Canada and Miami. We have anywhere between 100 and 200 employees in the field depending on the season and projects.

We are proud of RFJ's work and stand behind our craftsmanship. We combine old-world methods with state-of-the-art technology and materials to provide our customers with the highest-quality product. You can see the practice of these skills in several projects we have worked through the years. An excellent example of our plaster work is the Kelly Cullen Community Center, which received WACA's 2013 Construction Excellence Award for Historical Restoration Interior. RFJ successfully restored the original plaster on the 90-year-old building, which included a grand master stairway and an auditorium. This

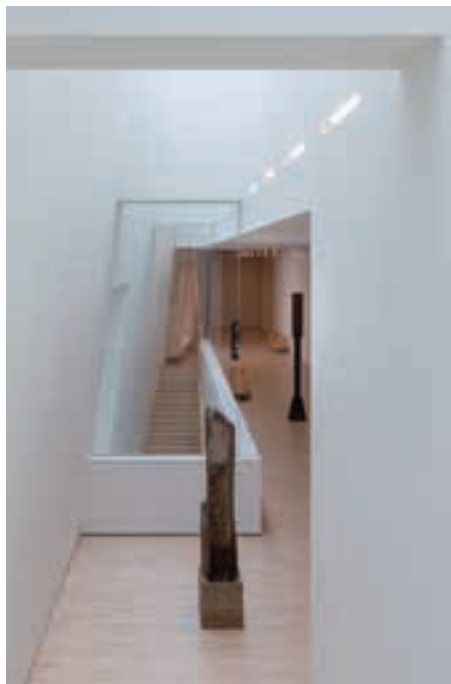


project had a special humanitarian purpose as it was for the Tenderloin District community, and some residents were without homes until the building's completion. A prominent and local landmark we worked on was the American

Conservatory Theater. The building was built in 1910 and designed by Walter D. Bliss and William B. Faville in the Classical Revival and late Victorian styles. The theater was listed on the National Register of Historic Places on May 27, 1975, and was designated as an official San Francisco landmark on July 11, 1976.

Other notable projects RFJ worked on are the world-renowned luxury Fairmont San Francisco Hotel, the Westin St. Francis Hotel and the Palace of Legion of Honor, with its four millennia of art history. For the Legion of Honor, we did all the plaster, and the final look and structure is due in large part to our company's workmanship. RFJ helped rebuild the state Capitol portico in Sacramento and the Oakland Rotunda with its 120-foot-high, 5,000-square-foot elliptical dome. The Cliff House Restaurant, nicknamed "Where San Francisco Begins" and located on the rock cliffs of Ocean Beach, is yet another iconic project RFJ worked on, contributing to its aesthetic.

We're particularly proud of our most recent accomplishment, the San Francisco Museum of Modern Art (SF MOMA). This construction feat had nearly unprecedented technical complexity. Due to the stringent design criteria, the metal framing was composed of heavy gauges, unique geometries and custom-designed stud and track designations. One gallery floor featured wave-shaped, precast glass fiber reinforced gypsum



(GFRG) domes inset in a flat level 5 finished suspended gypsum board ceiling. Almost every wall had to be individually built due to the custom intricacies of the design. One key architectural feature of the building was a wall that spanned from the fourth floor to the seventh floor. It was curved in both plan and section, existing along the main staircase spanning the gallery floors.

The new construction helped SF MOMA offer both the local and international community a new art experience in the City by the Bay.

In 2017, RFJ was named one of the Association of the Wall and Ceiling Industry's (AWCI) Top 50 Contractors and received AWCI's 2017 Excellence in Construction Quality Award for Ceilings for SF MOMA. The team at RFJ continually strives to elevate wall and ceiling construction to the highest degree.

I'm proud of our company's roots and history. RFJ Meiswinkel is one of the few third-generation companies still in business. Our line of specialty work in restoration has been the heart of the company's skill and life cycle. Part of our growth has been due to our employees, as we still employ people who have been with us since the 1980s. We're honored to have staff members who have stayed with us through difficult times, including a severe recession.

You could say I was born into the construction business. However, I've elected to stay in construction by choice. There's a long personal history with RFJ Meiswinkel and construction — when driving to the city, I'm able to see the buildings my family and the company have worked on. It's a good feeling to know RFJ Meiswinkel is connected to beautiful landmarks in the city and meaningful experiences the city has to offer.

**ClarkDietrich**  
BUILDING SYSTEMS

# DEFENDING YOUR WALLS FROM WATER.

See how the full line of BackerBead™ products can protect stucco and stone veneer walls from water intrusion. Get the details at [vinylcorp.com](http://vinylcorp.com)

BackerBead Original

BackerBead with Tear-away

BackerBead with E-Flange™

BackerBead Drip Flashing

**VINYL CORP.**

U.S. Patents D061,871, D162,316, all others Patent Pending



# Creating a Solution to Revised Silica Standard

by Chris Lee, WACA Safety Consultant

## OSHA Background

In March 2016, the federal Occupational Safety and Health Administration (OSHA) adopted changes to its respirable crystalline silica standard for the construction, maritime and general industry categories. At September's 2016 meeting, Cal/OSHA Standards Board adopted the federal revisions (now California Code of Regulations, Title 8, § 1532.3). Cal/OSHA Standards Board agreed with numerous construction industry representatives — including WACA — that an advisory committee should be formed to consider important issues for California's construction employers.

For the revised standard, federal OSHA and the Cal/OSHA Standards Board initially established an effective date of June 23, 2017. Both organizations extended that date to September 23, 2017.

## Key Provisions of the Revised Standard

- Reducing the permissible exposure limit (PEL) from 100 micrograms per cubic meter of air to 50 micrograms per cubic meter of air over an eight-hour time-weighted average
- Requiring engineering controls (such as water or ventilation) to limit worker exposure to the PEL
- Limiting worker exposure to high-exposure areas
- Requiring employers to develop a written exposure control plan
- Requiring employers to offer medical exams to highly exposed workers
- Requiring employers to provide training to workers on silica risks and how to limit their exposure
- Providing medical exams to monitor highly exposed workers and give them information about their lung health
- Providing flexibility to help employers protect workers from silica exposure

## Compliance Assistance Tool

To assist construction employers, Table 1 is contained in federal and state revisions. This table in Title 8 §1532.3 identifies 18 common construction tasks. For each of these tasks, the table includes the following:

- Equipment/task
- Engineering and work practice control methods
- Required respiratory protection
- Minimum assigned protection factors

For an in-depth review of these construction tasks, visit the following website: [www.dir.ca.gov/oshsb/Respirable-Crystalline-Silica-HORCHER.html](http://www.dir.ca.gov/oshsb/Respirable-Crystalline-Silica-HORCHER.html).

## WACA Members Have Two Alternative Methods to Ensure Compliance

For employers whose employees perform tasks **not** contained in Table 1, it is the employer's responsibility to assess and limit the exposure of respirable crystalline silica to employees, pursuant to paragraph (d)(2) "Exposure Assessment" of the Cal/OSHA standard, which addresses alternative methods.

Since virtually all the tasks identified in Table 1 are **not** performed by WACA members, there are two alternative methods to ensure compliance:

- 1) **Performance option.** Employers assess the eight-hour time-weighted average exposure for employees based on any combination of air monitoring data and/or objective data.
- 2) **Scheduled monitoring option.** Employers perform initial monitoring to assess the eight-hour time-weighted average exposure for each employee based on one or more personal breathing zone air samples that reflect the exposures of employees.

## WACA Safety Committee Creating a Solution

The Safety Committee decided earlier this year to ensure compliance with the revised standard in a way that would benefit members. Rather than individual members performing air monitoring independent of other members, a decision was made to collaborate on the collection of data that would benefit all members. It would comprise our own Table 1 specific to member tasks.

The Safety Committee created a Safety Committee Air Monitoring Tracker to compile a list of common tasks performed by contractors. Members of the committee agreed that they would undertake one or more of the 18 listed tasks, arrange for air monitoring and then share results with the committee.

Air monitoring was performed by either the company insurance carriers or by The Cohen Group, a recognized occupational safety and health consulting company. Once data is collected for those tasks, The Cohen Group will provide the following support to this effort:

- ✓ Review air monitoring data for silica conducted on behalf of the Wall and Ceiling Bureau (WCB) member companies to determine sampling details, including analytical and sampling methodology and environmental conditions.

- ✓ Research and review manufacturer data and OSHA data regarding silica sampling for drywall related operations (if any).
- ✓ Based on information reviewed from the first two items above, prepare an initial summary report on current data and gaps in data (if any).
- ✓ Attend a WCB Silica Task Force meeting to present an initial summary report and sampling/analytical methodology document.

### Cal/OSHA Endorses Approach

As WACA's safety consultant, I contacted Cal/OSHA Deputy Chief Eric Berg seeking guidance on construction tasks not covered by the Standards Board's Table 1 and clarification of the term "objective data." By a letter dated August 10, 2017, Berg shared pertinent information and stated, "Exposure monitoring data assembled by a group of employers would be considered objective data. Such data can be used to meet the requirements of subsection 1532.3(d)(2)(B)

for any employer, provided the data accurately represents exposures to respirable crystalline silica for each employee of that employer."

### WACA's Table 1 – Valuable Tool

Once the data collection has been completed and The Cohen Group validates the sample results and sampling methodology, the committee's initiative will conclude.

The completed WACA Table 1 will then be made available to members. If tasks performed by member company employees are consistent with those contained in Table 1, it may be used by that employer to demonstrate compliance with the revised Cal/OSHA standard found in California Code of Regulations, Title 8, § 1532.3.

*Chris Lee can be reached at [ccarlee@sbcglobal.net](mailto:ccarlee@sbcglobal.net) or (510) 821-0242 with any questions.*



# JOIN US FOR A

## FEBRUARY 15, 2018

**4 P.M. SOCIAL HOUR  
5 P.M. DINNER MEETING**

**\$65 RESTAURANT**  
Fishermen's Grotto  
2847 Taylor Street  
San Francisco, CA 94133

**PARKING** City parking lot is located on  
Jefferson and Taylor streets  
(next to Boudin Bakery)



**REGISTER  
ONLINE**

[www.wallandceilingalliance.org](http://www.wallandceilingalliance.org)  
"Calendar of Events" page. Space is limited.  
**Pre-registration required to attend.**

**PARTNER  
WITH US!**

Opportunities to sponsor cocktail hour  
and dinner wine available. Contact Julie  
Dunaway at [julie@wallandceiling.org](mailto:julie@wallandceiling.org).





## SAVE THE DATE!

### The Northwest Wall & Ceiling Industries Convention & Trade Show

May 3-5, 2018

Join us at the largest gathering of wall and ceiling industry professionals on the West Coast, drawing attendees from all over the country.

**206-524-4243 • [info@nwcib.org](mailto:info@nwcib.org)**

Visit [wallcellingshow.org](http://wallcellingshow.org) for the latest information

**BE INSPIRED**  
Visionary Leadership—  
Shaping the Future of Our Industry

## LiUNA! BUILDS PARTNERSHIPS

The Laborers' Union knows that its members' success goes hand-in-hand with the contractor and provides the resources to foster mutual success. No matter what the issue is, the Laborers are here to help.

- Project tracking and alerts
- Market research and analysis
- Training and apprenticeship
- OSHA and regulatory assistance
- Workers' Comp / ADR programs

**Find your next project, perform it safely, complete it on time and under budget with the Laborers Union.**

Northern California District Council of Laborers  
(925) 469-6800 • [www.ncdclaborers.org](http://www.ncdclaborers.org)

## 2017 CALENDAR OF EVENTS

**NOVEMBER 15, 2017**

**WACA Member Meeting Bocce Ball**  
Campo di Bocce  
Fremont, California

**DECEMBER 4, 2017**

**2017 Construction SuperConference**  
Encore at Wynn  
Las Vegas, Nevada

**DECEMBER 9, 2017**

**WACA Holiday Party**  
Fairmont San Francisco  
San Francisco, California

**JANUARY 9-11, 2018**

**NAHB International Show**  
Orange County Convention Center  
Orlando, Florida

**FEBRUARY 26-28, 2018**

**99th Annual AGC Convention/ 2018 AGC Equipment, Technology & Construction Solutions Expo**  
Hyatt Regency  
New Orleans, Louisiana

**MARCH 24-28, 2018**

**AWCI Convention**  
Walt Disney World Swan and Dolphin Resort  
Orlando, Florida

**MAY 3-5, 2018**

**NWCB Convention**  
The Westin La Paloma Resort  
Tucson, Arizona



**PREFERRED DISTRIBUTOR OF *SCAFCO*.  
AND OTHER QUALITY PRODUCTS**

Our CWaIIA branch stores carry an extensive inventory of SCAFCO steel framing and accessories, along with **full access to SCAFCO's engineering team**. They offer value engineering for innovative new solutions, efficient design opportunities and laborsaving product options.

With direct access to over 500,000 pounds of steel framing inventory at each location, CWaIIA can stock a wide variety of heavy gauge and light gauge steel studs and track, shaftwall, clips and backing products.

- **Massive local inventory ensures fast delivery**
- **Professional sales support to resolve your toughest problems**

No matter the size of your steel-framing project, count on CWaIIA to have the quantity and selection you need.



**THE PRODUCTS, SERVICE,  
& INVENTORY YOU NEED.**



**WASHINGTON  
CALIFORNIA  
MONTANA  
OREGON  
ALASKA  
NEVADA  
HAWAII  
IDAHO**



[www.CWaIIA.com](http://www.CWaIIA.com)

# STAY IN THE KNOW

## ► Ironwood Commercial Builders, Inc. Recognized by *San Francisco Business Times*

With Nancy Brinkerhoff as owner and president, Ironwood Commercial Builders, Inc. has been recognized by the *San Francisco Business Times* as one of the 2017 Top 100 Women-Owned Businesses in the Bay Area.

## ► Jim Ruane Sr. Retiring as San Bruno Mayor After Two Decades

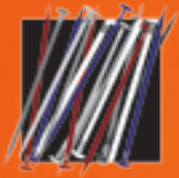
After more than two decades as an elected official, San Bruno Mayor Jim Ruane Sr. is retiring from his post. Following 22 years on City Council, Ruane is proud of the time he spent serving his community, especially in the aftermath of the 2010 Pacific Gas and Electric pipeline explosion. Looking ahead to a life after office, Ruane will focus on his work as a plastering contractor and efforts with surrounding labor groups. He also plans to spend more time with his family and four grandchildren.

## ► Larry Curiale Becomes Regional Sales Manager at CWalla

Replacing Mike Mallick at CWalla is Larry Curiale, taking over the position of regional sales manager at the company. Curiale can be reached at [larrycuriale@cwalla.com](mailto:larrycuriale@cwalla.com) or (415) 852-7974.

## ► Terry Kastner Appointed as NWCB's Executive Director

Terry Kastner has been appointed as the Northwest Wall & Ceiling Bureau's (NWCB) executive director. Kastner joined NWCB in 2007 as director of technical services. He has over 30 years of experience in the wall and ceiling industry, beginning his career as a union carpenter with L.A.D.S. Local 1144. After 13 years in the union, he went to work as a project manager/estimator for a nationwide specialty drywall contractor. Although the new position comes with its own set of administrative responsibilities, Kastner will continue his strong commitment to the technical aspects of the wall and ceiling industry.



# CTCNC CLASS CALENDAR

*Carpenters Training Committee for Northern California*

Class	Start date	End date	Class location	Class days	Class Times	Class hours	Class sponsor	Contact name	Contact phone
Construction Math & Intro To Working Dwgs	12/4/17	12/7/17	LU 605, Marina	Mon-Thur	5:30pm-9:30pm	16	CTCNC TD	CTCNC Training Dept.	(925) 462.9640
Layout Instruments - Standard	12/5/17	12/13/17	Fairfield Training Center	Tue-Fri, Tue-Wed	5:30pm-9:30pm	24	CTCNC TD	CTCNC Training Dept.	(925) 462.9640
Signage	12/7/17	12/7/17	LU 605, Marina	Thursday	5:30pm-9:30pm	4	CTCNC TD	CTCNC Training Dept.	(925) 462.9640
Fire Stop Installation	12/9/17	12/9/17	Pleasanton Training Center	Saturday	8:00am-4:30pm	8	CTCNC TD	CTCNC Training Dept.	(925) 462.9640
Steel Framing	12/12/17	12/21/17	Pleasanton Training Center	Tue-Fri, Tue-Thur	5:30pm-9:30pm	24	CTCNC TD	CTCNC Training Dept.	(925) 462.9640
Construction Calculator	12/14/17	12/15/17	Fairfield Training Center	Thur-Fri	5:30pm-9:30pm	8	CTCNC TD	CTCNC Training Dept.	(925) 462.9640
Construction Calculator	12/16/17	12/16/17	Pleasanton Training Center	Saturday	8:00am-4:30pm	8	CTCNC TD	CTCNC Training Dept.	(925) 462.9640
Rigging/Certification	12/18/17	12/23/17	Pleasanton Training Center	Mon-Sat	7:00am-4:30pm	40	CTCNC TD	CTCNC Training Dept.	(925) 462.9640
Concrete Formwork/ Certification	12/19/17	12/29/17	Fairfield Training Center	Tue-Fri, Sat, and Tue-Fri	5:30-9:30pm Eves, 8am-4:30pm Sat	36	CTCNC TD	CTCNC Training Dept.	(925) 462.9640
Drywall/Suspended Ceilings and Soffits	12/27/17	12/29/17	Fairfield Training Center	Wed-Fri	5:00pm-9:30pm	24	CTCNC TD	CTCNC Training Dept.	(925) 462.9640

For full class list, go to [www.ctcnc.org](http://www.ctcnc.org)



## Drywall and Stucco Supply

**Santa Rosa, CA**

(707) 525-8775

**Benicia, CA**

(707) 747-0102

**Chico, CA**

(530) 879-1620

[www.wrightbrossupply.com](http://www.wrightbrossupply.com)

## WELCOME NEW ASSOCIATE MEMBER

### ★ Action Gypsum Supply, LP

Action Gypsum Supply, LP has recently acquired the majority share in ARGOS Material Distribution and has opened its third California branch. It is at 21040 Forbes Street, Hayward, California 94545. The 40,000+ square-foot facility, ideally located in the heart of the Bay area with easy access into neighboring Oakland and downtown San Francisco, allows Action to facilitate what is considered one of the country's most prolific markets. Industry veterans Eric Ladd, regional manager, along with Rui Bronze, branch manager, will lead the sales and operations efforts for this location, now currently open to the public. AGS currently has twelve branches total: eight in the major markets of the state of Texas, one location in Arizona and three in California by joint venture with ARGOS Material Distribution. For more information, please visit [www.actiongypsum.com](http://www.actiongypsum.com) or email Eric Ladd, regional manager, at [eladd@actiongypsum.com](mailto:eladd@actiongypsum.com) or Rui Bronze, branch manager, at [rbronze@actiongypsum.com](mailto:rbronze@actiongypsum.com).



ASSURANCE | CONSULTING | INCOME TAX | FORENSIC ACCOUNTING

JHS CPAs, LLP is a full-service accounting firm with offices in Northern and Southern California. For over 35 years, we have provided unmatched support, compliance, assurance and strategic accounting advice to a wide range of privately-held companies in multiple industries with an emphasis in construction and real estate.

135 Town & Country Drive, P.O. Box 9500 | Danville, California 94526 | 925.820.1821

2300 E. Katella Avenue, Suite 370 | Anaheim, California 92806 | 714.978.1800

[www.JHS.com](http://www.JHS.com)

**NEW! PRODUCT SOLUTIONS**

## MOISTURE MANAGEMENT MADE EASY!

**NEW! ULTRA DRAIN MAT™**  
DRAINAGE & VENTILATION SYSTEM

**NEW! U-DRIP TRAC™**  
FOR EIFS

**NEW! MESH CORNER BEAD**  
FOR EIFS, DIRECT APPLIED

**ULTRA-LATH PLUS®**  
FIRE TESTED PLASTIC LATH

**ASTM**  
MEETS ASTM  
C1764 • C1780  
C1787  
C1788

Plastic Components' PVC TRIMS and ACCESSORIES save time, money – AND deliver a rustproof, moisture-resistant installation.

**PLASTIC PC COMPONENTS inc.**

© 2017 Plastic Components, Inc. [www.plasticcomponents.com](http://www.plasticcomponents.com) • 800.327.7077



# WACA MEMBERS

## CONTRACTOR MEMBERS

Aderholt Specialty Company, Inc.  
Allen Specialties, Inc.  
Anning-Johnson Company  
Basco Drywall & Painting Co.  
Bayside Interiors, Inc.  
Boyett Construction, Inc.  
Brady Company/Central California, Inc.  
Bruce K. Hall Construction  
California Drywall Co.  
Coast Building Products  
Component West  
Concord Drywall, Inc.  
Creative Ceilings & Drywall  
Custom Drywall, Inc.  
Daley's Drywall & Taping, Inc.  
Dasco Construction & Drywall, Inc.  
Davidson Plastering Inc.  
Denham Contracting, Inc.  
Elite Plastering, Inc.  
Eric Stark Interiors, Inc.  
Excel Lathing, Inc.  
Fisher Lath and Plaster, Inc.  
Freas Plastering  
Frey Plastering, Inc.  
G & S Drywall, Inc.  
Giampolini Contractors  
Golden Gate Drywall  
Halstead Drywall, Inc.  
Harrison Drywall, Inc.  
Hartley Construction, Inc.  
Henley & Company  
Ironwood Commercial Builders, Inc.  
J&J Acoustics, Inc.  
Karsyn Construction, Inc.  
KHS&S Contractors  
Kirk Builders  
Magnum Drywall  
Nevell Group, Inc.  
North Counties Drywall, Inc.  
O'Donnell Plastering, Inc.  
Olea Plastering  
Pace, Inc. dba Pace Drywall  
Pacific West Lath & Plaster, Inc.  
Patrick J. Ruane, Inc.  
Performance Contracting, Inc. (PCI)  
Psi3g, Inc. (Partition Specialties, Inc.)  
R. Davidson Plastering, Inc.

Raymond-Northern California, Inc.  
RFJ Meiswinkel Company  
Robert Boeger Plastering, Inc.  
Russell Hinton Co. Inc.  
Service Plastering II  
Spacetone Acoustics, Inc.  
SRJ Drywall  
Standard Drywall, Inc.  
Stockham Construction, Inc.  
Sunshine Construction  
Surber Drywall Construction, Inc.  
Swinerton Builders  
Thomas Interiors, Inc.  
Western Partitions, Inc.

## ASSOCIATE MEMBERS

Action Gypsum Supply, LP  
Allura Fiber Cement  
American Express  
AMS dba Allied Building Products  
AMES Taping Tools  
Armstrong World Industries  
Artisan Plaster Supply  
BackrTape  
BASF Senergy  
Bay Area Builders Exchange  
Bear Scaffold and Services  
BEHR® Paint  
BlazeFrame Industries  
BMI Products  
Bolton & Company  
California Bank of Commerce  
CEMCO  
CertainTeed Gypsum  
CityMix, Inc.  
ClarkDietrich Building Systems  
Consolidated Fabricators Corp.  
CWALLA  
Davis Wire  
Demand Products, Inc.  
Dryvit Systems, Inc.  
DuPont Tyvek  
Edward Jones Investments  
Ficcadenti Waggoner & Castle  
Structural Engineers, Inc.  
Fortifiber Bldg. Systems Group  
Foundation Building Materials  
Fry Reglet

GC Products, Inc.  
Georgia-Pacific Gypsum  
Grabber Construction Products  
Hilti  
ISU Sander, Jacobs, Cassayne Insurance Services  
JHS CPAs LLP  
L&W Supply dba CalPly  
Leonidou & Rosin Professional Corporation  
Littler Mendelson  
Merlex Stucco, Inc.  
National Gypsum Co.  
Omega Products  
PABCO Gypsum  
Parex USA Incorporated  
Peninsula Bldg. Materials Co.  
Pentarisk Insurance Services  
Plexxis Software  
Pliteq Inc.  
QuietRock  
QUIKRETE  
Radius Track Corporation  
REW Materials  
Rivers Del Rey  
S & K Marketing Group, LLC  
Saint-Gobain ADFORS  
Salsbury & Associates Insurance Services, Inc.  
SCAFCO Steel Stud Company  
Scaffold Solutions Inc.  
Service West, Inc.  
Simpson Strong-Tie  
Specified Technologies Inc. (STI) dba Firestop  
Starr's Building Supply  
Steeler Inc. (Newark Division)  
Sto Corp.  
Structa Wire Corp.  
Summit Financial Group, LLC  
Sweeney, Mason, Wilson & Bosomworth  
Syntheon, Inc.  
The Mau Law Firm  
The Pendelton Co., Inc.  
Top Gun Drywall Supply  
Tree Island Steel  
Tremco Incorporated  
VaproShield  
Vinyl Corp.  
Westpac Materials  
Westside Building Material Corp.  
Wright Bros. Supply



## PRODUCTS

CWaIIA offers high-quality steel framing components, drywall, ceiling systems, FRP panels and much more.

## SERVICE

CWaIIA has stocking crews and an entire fleet of modern delivery trucks and booms to deliver and stock your projects.

## INVENTORY

CWaIIA understands that not every project goes according to plan, so we maintain large product inventories ready for pickup at our 20 convenient locations.



\*Not all products are available at every CWaIIA location. Check with your local representative for more information.



**THE PRODUCTS, SERVICE,  
& INVENTORY YOU NEED.**



**WASHINGTON  
CALIFORNIA  
MONTANA  
OREGON  
ALASKA  
NEVADA  
HAWAII  
IDAHO**



[www.CWaIIA.com](http://www.CWaIIA.com)

# SOUND GUARD

THE SILENT STEEL FRAMING SYSTEM

**SoundGuard™ Silent Steel Framing System** is an interior framing system specifically designed to easily construct partition walls with high STC ratings. SoundGuard™ was created to save labor on construction, save interior square footage, and achieve excellent sound ratings.

- Great limiting wall heights
- Significant labor savings
- Increased STC ratings
- Eliminate layers of GWB
- Increases usable square footage

 **SCAFCO**  
Steel Stud Company®



Six Convenient Northern California/Nevada Locations  
Fresno San Francisco San Jose Stockton Sacramento Reno  
509-256-9911 415-822-7974 408-440-2092 209-470-8033 916-424-7700 775-440-4380

Preferred Distributor of SCAFCO and Other Quality Products

Contact SCAFCO Technical Services: 889-789-8669 | [Technical@SCAFCO.com](mailto:Technical@SCAFCO.com)



TESTED by  
**SSA acoustics**

[www.SCAFCO.com](http://www.SCAFCO.com)